

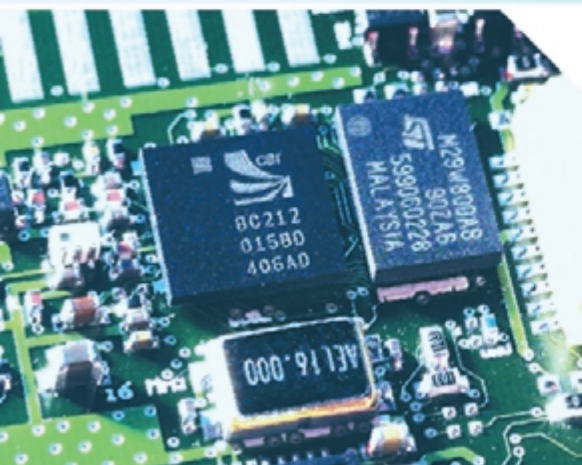
RoHS Compliant



BL-819 & BL-830

CLASS 2 RS232 BLUETOOTH ADAPTOR

'WIRELESS SOLUTIONS ENGINEERED TO EXCEED EXPECTATIONS'



Features

- Class 2 Bluetooth device
- Suitable for ANY device with serial port
- Handshaking CTS/RTS & DTR/DSR
- Range, Office: 10m Field: 30m subject to local environment conditions
- Power On Pin 9
- Integral Antenna
- Upgradeable onboard flash memory for latest Bluetooth Features
- 4 ways to Configure
- Up to 1.0 Megabaud RS232
- 9 Pin Male and Female Options

[Click on each feature to find similar products](#)

Options



Class 2 RS232 Bluetooth adaptor:
9 Pin Male: BL-819



Class 2 RS232 Bluetooth adaptor:
9 Pin Female: BL-830



Class 1 devices see: BL-521 and BL-730

TEL: +44 (0) 151 220 2500

Description

Compact, Award winning Brainboxes RS232 Adaptor allows any device with an RS232 port to communicate with another Bluetooth device without the need for any additional software.

Ideal for Bluetooth enabling 'dumb' RS232 devices such as dataloggers etc. with option to power from Pin 9. Based on fully tested Bluetooth silicon, allowing communications at the full Bluetooth data rates. Integral antenna.

Brainboxes expertise covers every niche of the RS232 adaptor market, with four products including an OEM module.

Software

Four configuration modes tailored to suit every environment:

- o Configuration Utility (for Windows)
- o Remote Configuration Over Bluetooth Link
- o Command line Configuration
- o Bulletin Board Configuration

Also included full product documentation and troubleshooting guide.

Find out about Brainboxes excellent Configuration Utility Software Features: [Click Here](#)



ORDER

Description

CLASS 2 BLUETOOTH RS232 ADAPTOR DTE (9 Pin Male)
CLASS 2 BLUETOOTH RS232 ADAPTOR DCE (9 Pin Female)

Code







BL-819
BL-830

EMAIL: SALES@BRAINBOXES.COM

WEB: WWW.BRAINBOXES.COM



CLASS 2 BLUETOOTH RS232 ADAPTOR

Product Code BL-819 & BL-830	
Bluetooth General	
Bluetooth Qualification	1.1 Qualified
Bluetooth Radio	
Class Of Device	Class 2
Radio Frequency	2.4GHz
Integral Antenna	Yes
Receiver Sensitivity	-83 dBm
Output Power	> 0 dBm < +4 dBm
Operating Distance (Typical) Metres*	Field: 30m Office: 10m
Bluetooth Settings	
Max Transfer rate (Kb/s)	up to 723
Configurable Local Device Name and Device Class	Yes
Pairing Options	Enable/disable/link key expiry/2 proximity modes
Client and Server Mode	Yes
Configurable Discoverability, Security mode and PIN number	Yes
PICONET & SCATTERNET capable	Yes
PARK and SNIFF mode	Yes
Factory Reset	Yes
Serial Port Settings	
Baud Rate (Kb/s)	244 - 921,600
Data Bits	8
Parity	Odd, Even, None
Stop bits	1 or 2
Flow Control	RTS/CTS , DTR/DSR
Bluetooth Security	
Encryption	'None' , 'Point to Point' or 'Point to Point and Broadcast'
PIN Authentication	PIN: Select from list or enter custom (16 character limit)
Security Levels	Low, Medium & High (Security Mode 1,2 & 3)
General	
Power Source	External Power Device: 110mA @ 5V Or Power On Pin 9: 5V - 13.6 V
LED's	Combined power and Bluetooth link LED
Power Consumption	Depends on usage, more info CLICK HERE
Weight	24g
Size WxDxH (mm)	34 x 75 x 18
RS232 connector	9 pin male (BL-819) 9 Pin female (BL-830)
Interface	
OS Compatibility	This device is compatible with any product with a serial port
Configuration	Windows Utility software or Remote/terminal Config
Awards	 Winner Microsoft Tech Ed 2005, Mobile Computing Europe: Bluetooth CompactFlash and Bluetooth Serial Connectivity Winner 2005 European Electronics Industry Awards: Manufacturer of the Year
Approvals & Accreditations	   UL, CE, FCC, Bluetooth Approved
Box Contents	Bluetooth RS232 Adaptor Power Supply CD with Utility software, manual, troubleshooting guide and datasheet Quick Start Guide
OEM option	Available for bulk buy OEM
Product Support	Lifetime Email and Phone Support from fully qualified, friendly staff 40 hours a week
Warranty	3 years
Made In	  Manufactured in the UK by Brainboxes Winner 2005 European Electronics Industry Awards Manufacturer of the Year
Customisable	Brainboxes operate a "Perfect Fit Custom Design" policy for volume users More Info: CLICK HERE



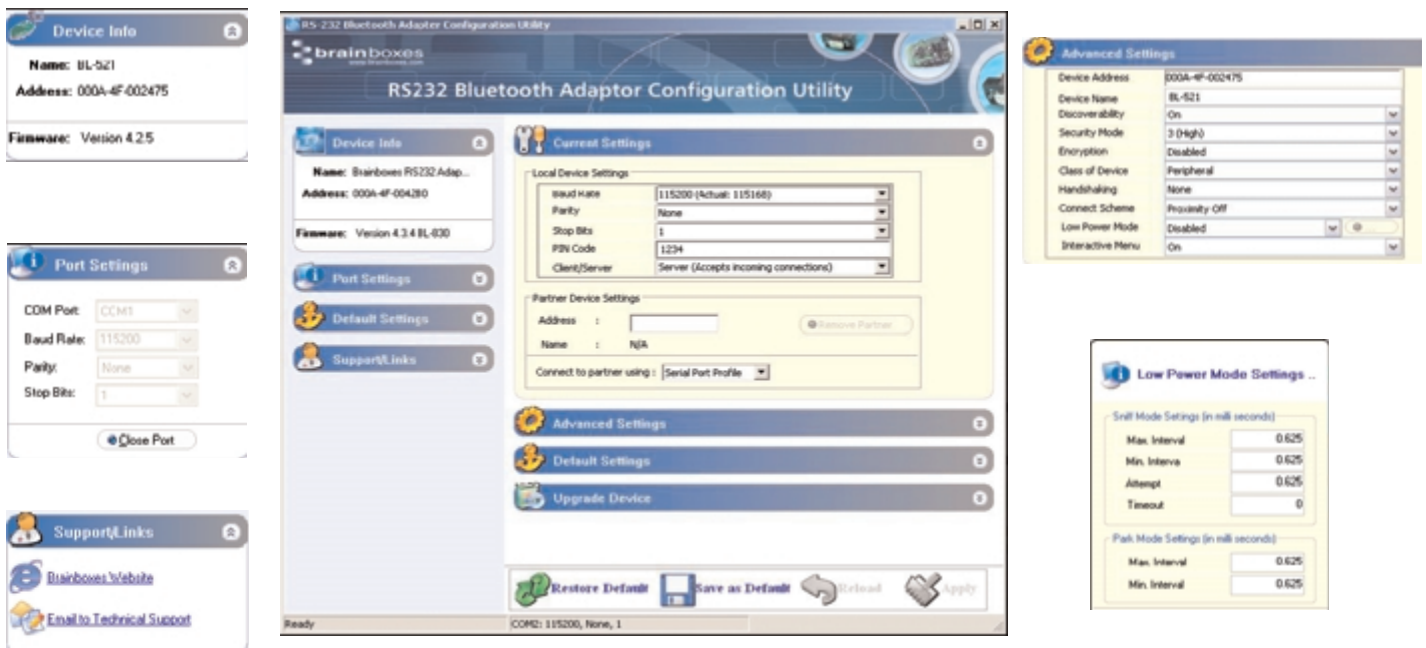
CLASS 2 BLUETOOTH RS232 ADAPTOR

Glossary: Product Features Explained

Bluetooth RS232 Adaptor Configuration Utility

Brainboxes Bluetooth RS232 Adaptors have 4 ways to be configured: Configuration Utility, Bulletin Board, Remote Config or Command Line. Shown here is our simple yet complete Configuration Utility, which allows full customisation of a Brainboxes Bluetooth RS232 Adaptor.

Usability that speaks for itself



Bluetooth Device Class

There are 3 classes of Bluetooth device defined to suit different needs:

Class 1 - Long Range

Maximum Output Power of 100mW (20dBm)

Class 2 - Medium Range

Maximum Output Power of 2.5mW (4dBm) most common

Class 3 - Short Range

Maximum Output Power of 1mW (0dBm) very rare

A value of distance cannot be explicitly stated for each device class; every user environment is slightly different, and affects the signal in different ways. The best way to compare devices operating range is by comparing Output Power. A device with a larger output power will be able to communicate with other devices over a further distance. Most Brainboxes devices are class 1 devices with a very powerful Power Output, Brainboxes Bluetooth Class 1 devices have one of the most powerful Bluetooth radios in the industry - 14dBm!



CLASS 2 BLUETOOTH RS232 ADAPTOR

Brainboxes' Service

"Brainboxes offers free lifetime support for ALL customers."



We aim to provide industry leading support for our customers. Our highly trained and helpful support engineers sit and work closely with the product designers, developers, and testers to ensure an in-depth knowledge of the products. Support can be found by emailing support@brainboxes.com or calling: +44 (0)151 220 2500 during UK office hours.

Support website: www.brainboxes.com/support/index.asp

"Brainboxes offers 3 year 'no quibble warranty' on all Bluetooth products."

If, for whatever reason, your Brainboxes Bluetooth device does become dysfunctional Brainboxes are happy to replace it thanks to our "3 year no quibble warranty". Peace of mind for your investment.

Brainboxes' Kaizen

"Brainboxes constantly strives to achieve higher standards for the benefit of customers."



'Kaizen' is a Japanese term meaning 'continuous improvement'. Kaizen has been implemented throughout Brainboxes, resulting in significant improvements to our products and our customer service, as illustrated by the development of our own custom ASIC "LYNX" and our new lifetime warranty. As part of this ongoing process, in 2004 we embarked on 'Lean' and '6 Sigma' programs which are successfully increasing productivity and efficiency in all areas of the company. **More Info:** [Click Here](#)

What Can I do with Bluetooth?

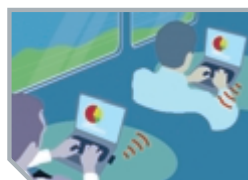
Bluetooth makes the sharing and exchange of information between mobile or static devices as simple as possible. Whether at home, on the move, or in the office it can be used for networking, sharing files, synchronizing information, email, Internet access, printing, and more. In industry it can be used to wirelessly control equipment and machinery - perfect for servicing inaccessible devices.



Connect **wirelessly** to a Bluetooth printer to easily **print** copies of your documents



Use Bluetooth in test or manufacturing to **control and monitor** equipment



Create instant **ad-hoc networks** to share files and information



Connect to the **Internet** from anywhere at **home** via a Bluetooth broadband modem



Email anywhere by connecting your laptop or Pocket PC to your Bluetooth phone